



# Facilitating Community-Based Research

Alaska Native Science Commission  
429 L Street  
Anchorage, Alaska 99501  
[www.nativescience.org](http://www.nativescience.org)

# A Partnership Approach

- The Alaska Native Science Commission was created to bring together research and science in partnership with the Native community. It serves as a clearinghouse for proposed research, an information base for ongoing and past research and an archive for significant research involving the Native community. We provide information, referral and networking services for researchers seeking active partners in the Native community



# Mission Statement

- The mission of the Alaska Native Science Commission is to endorse and support scientific research that enhances and perpetuates Alaska Native cultures and ensures the protection of indigenous cultures and intellectual property





# Mission

- To provide information to Alaska Native communities regarding science and research that impacts their health, life, culture and environment.



# Purpose

- The Alaska Native Science Commission serves as a clearinghouse for proposed research, an information base for ongoing and past research and an archive for significant research involving the Native community. We provide information, referral and networking services for researchers seeking active partners in the Native community





# GOALS

## ■ GOALS

- Facilitate the inclusion of local and traditional knowledge into research and science.
- Participate in and influence priorities for research.
- Seek participation of Alaska Natives at all levels of science.
- Provide a mechanism for community feedback on results and other scientific activities.
- Promote science to Native youth.
- Encourage Native people to enter scientific disciplines.
- Ensure that Native people share in the economic benefits derived from their intellectual property.

# Alaska Federation of Natives Policy Guidelines for Research

- Advise those Native people who will be affected by the study of the purpose, goals and time frame of the research, the data-gathering techniques, the positive and negative implications and the impacts of the research.
- Obtain informed consent of the appropriate governing body.
- Fund the support of a Native research committee appointed by the local community to assess and monitor the project and ensure compliance with the expressed wishes of Native people.
- Protect the sacred knowledge and cultural/intellectual property of Native people.
- Hire and train Native people to assist in the study.
- Use Native languages whenever English is the second language.
- Include Native viewpoints in the final study.
- Acknowledge the contributions of Native resource people.
- Inform the Native research committee in a summary report, in non-technical language, of the major findings of the study.
- Provide copies of the study to the local people.

# Traditional Knowledge and Contaminants

- *Documents Traditional Knowledge about environmental changes throughout Alaska*

- [www.nativeknowledge.org](http://www.nativeknowledge.org)

*Contents:*

*Resource Guide for Tribes*

*Search the database*

*Native Concerns*

*Research Summaries*

*Related Websites*





# Alaska Native Community Resources Directory

- *A statewide directory of Native Scientists and other community resources.*
- *Information being gathered includes contact person, area of knowledge (beaver, moose, ice, climate change, fish, plants, etc.) and location of observations and knowledge.*

# Alaska Native Regional Research Plans



- *Identifies community research protocols, prioritized research topics and community contacts.*
- *Lists NSF and other research in region.*
- *Regional Research Plans assist NSF staff and researchers in identifying priorities and research needs of Alaska Native communities. 2003 workshops were held in Kotzebue and Anchorage.*

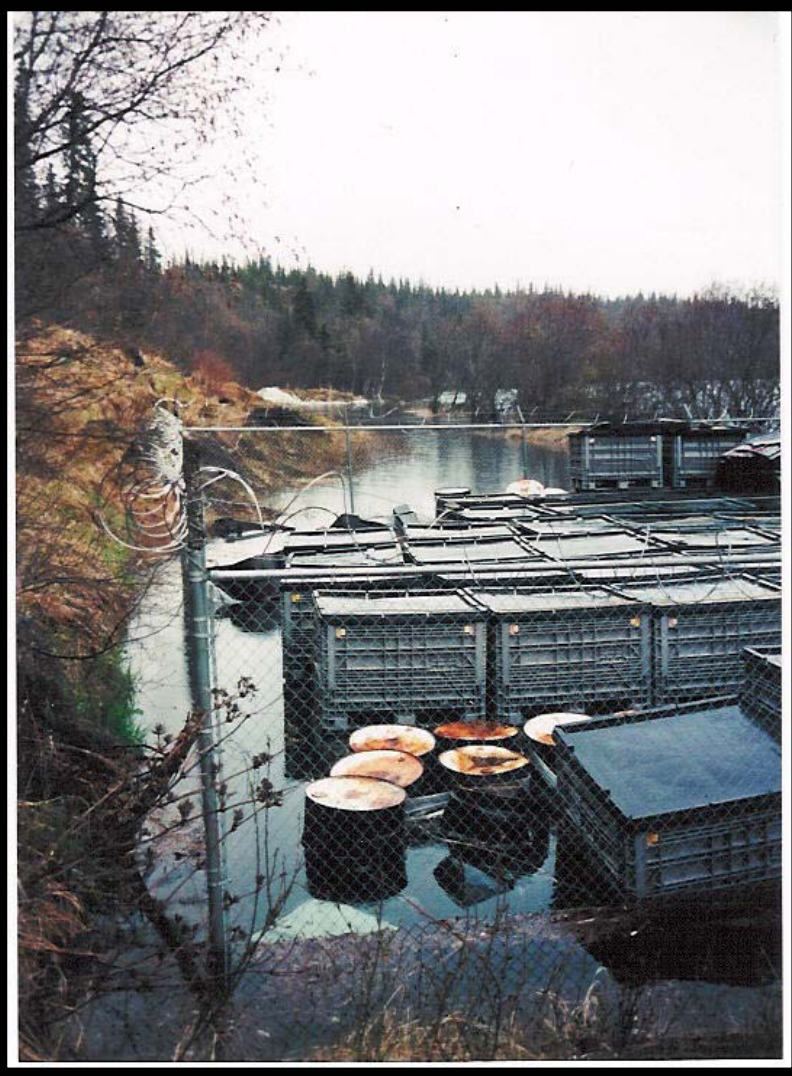
# Alaska Native Science Internship Program

- *ANSC places Alaska Native college students in areas of science and research.*
- *Interns work with Native organizations and researchers in a variety of projects such as contaminants, biology, subsistence, cultural and social issues, and education. In 2002, 9 interns filled 13 positions.*





# Mini-Grant Program



- *This program enables tribes in Alaska to identify and address their environmental concerns through community-based/driven research.*

# Mini-Grants

- Purchase community burn barrels.
- What causes birds to have sores and be deformed?
- What is causing the sores and lumps on salmon?
- Take youth hunting with elders and teach Native language and traditional food gathering.
- Is the sewage lagoon contaminating our subsistence foods?
- Why are the fish in our area declining?
- Is our dump contaminating our drinking water?





# Mini-Grant Program

- Role of Science Advisors
- Community Participation
- Laboratory Testing
- Quality Assurance Project Plan
- Community Discussion of Results





# Steps

- Providing structure & organization
- Responding to needs
- Building trust
- Building capacity
- Providing assistance
- Providing funding
- Providing information

